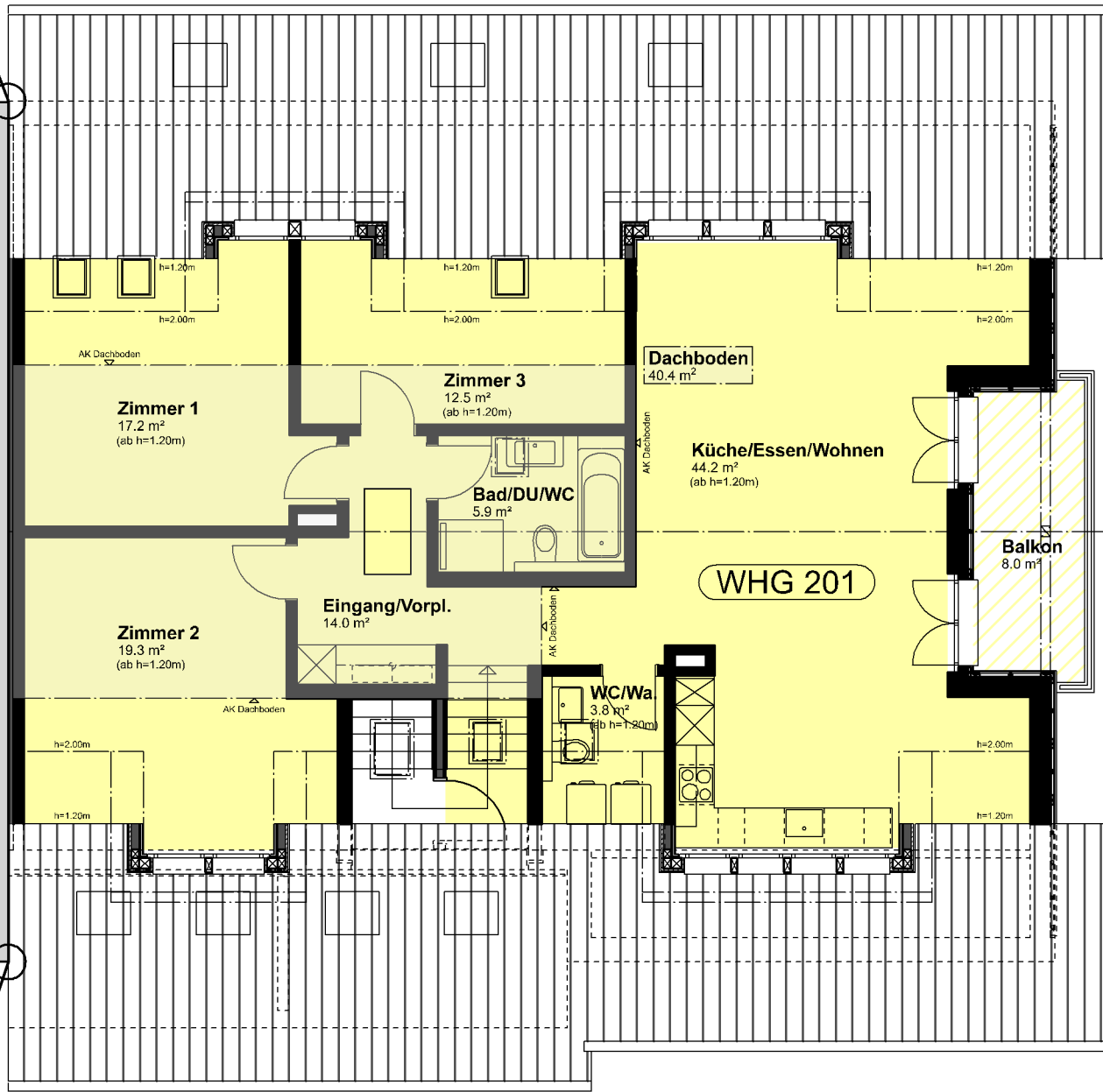
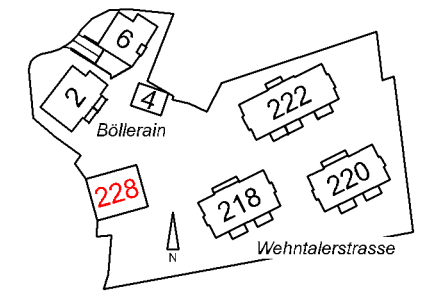
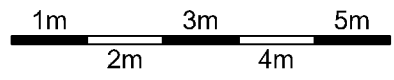


Überbauung Wehntalerstrasse, 8106 Adlikon

Wehntalerstrasse 228

Dachgeschoss



4 1/2 Zi-WHG 201
exkl. Dachboden, BF= 40.4 m²
Bruttowohnfläche (h=1.20) 123.2 m²
Nettowohnfläche (h=1.20) 116.9 m²

N
Alle m²-Angaben sind ca.-Werte.